

USB Adaptor



- Make/receive both VoIP calls and PSTN regular calls simultaneously
- PC-to-PC, PC-to-Phone, Phone-to-Phone operation
- SKYPE ready, share your standard phone with Skype
- Cheap calls

CONTENTS

CHAPTER 1 Welcome to USB Adaptor

1.1 Summary	3
1.2 Features	3
1.3 System Requirements	3
1.4 Package Contents	3

CHAPTER 2 Use of USB Adaptor

2.1 Run Skype	4
2.2 Connect USB Adaptor to PC	5
2.3 Run SkypeMate	5
2.4 Channels Switch	6
2.5 Make calls through USB	6
2.5.1 Call another Skype user (PC to PC)	6
2.5.2 Call to regular phone (PC to Phone)	6
2.6 Make calls through PSTN (Phone to Phone)	7
2.7 Answer a call	7
2.8 Adjust options (volume and default channel)	7
2.9 FAQ	7

The information in this document is subject to change without notice and does not represent a commitment on the part of the developer. This document contains materials protected by copyright. All rights are reserved. No part of this manual may be reproduced or transmitted in any form, by any means or for purpose without express written consent.

CHAPTER 1

Welcome to USB Adaptor

1.1 Summary

USB Adaptor is a most effective and easy mode of communication. User can enjoy an Internet phone(VoIP) or a regular phone by pressing "*" key to switch the channel. It embraces the great convenience and big savings of using VoIP calls.

1.2 Features

1. Receive both VoIP calls and PSTN regular calls simultaneously
2. PC-to-PC, PC-to-phone, Phone to Phone operation
3. Phone ring signals are generated with Skype incoming calls(for B2K)
4. Plug-and-play installation, USB1.1 compatible, no need sound card.
5. Echo cancellation, noise reduction
6. Full duplex communication

1.3 System Requirements

1. PII with 200 MHz CPU or better with USB interface
2. 64MB of RAM
3. 10MB or more hard disk space
4. Operating System: Windows 98/ME/2000/XP
5. Network: LAN, ADSL, ISDN, 33.6K modem or better

1.4 Package Contents

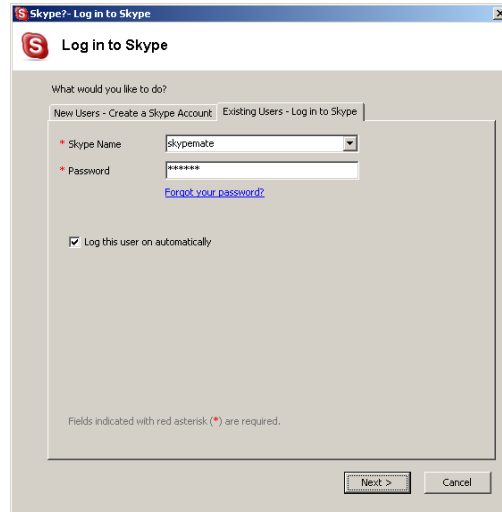
1. USB Adaptor x1
2. USB Cable x1
3. User Guide x1
4. Installation CD x1

CHAPTER 2

USE of USB Adaptor

2.1 Run Skype

- ▣ Download Skype software and install it (www.skype.com), the version must be 1.0.0.106 or higher.
- ▣ Run Skype and log in with skype account.




You can create a Skype account as shown below:



After the software startup, the icon will appear to the system tray as shown below:




That indicates the Skype has successfully connected to Internet. If it hasn't connected to Internet, the icon will be shown as , you have to check whether PC is connected to Internet successfully or not.

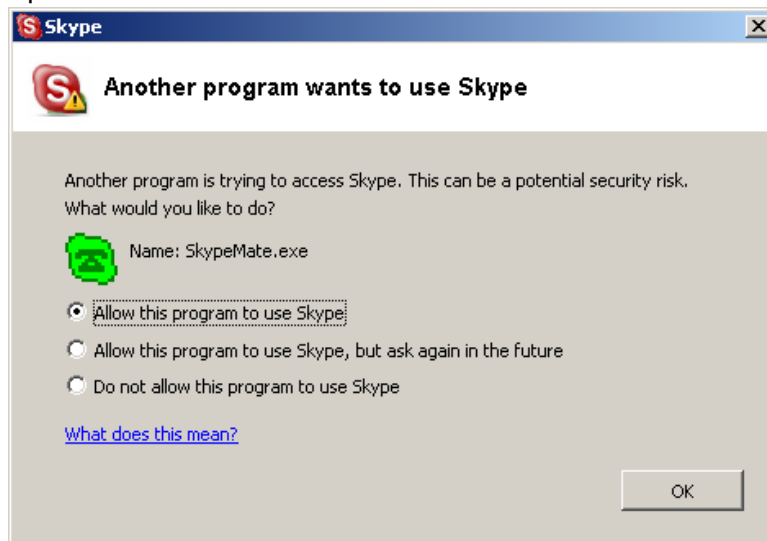
2.2 Connect USB Adaptor to PC

- ▣ Connect USB Adaptor to PC, POWER indicator will be on.
- ▣ Plug PSTN line in "LINE" port.
- ▣ Connect Phone to "TEL" port.

2.3 Run SkypeMate

- ▣ Insert the SkypeMate Installation CD into CD-ROM, and install it.
- ▣ Run SkypeMate

Double-click the icon  on the desktop, the Skype program will pop up the window as shown below:



Select the first item "Allow this program to use Skype", click "OK" button.


Note: If you selected the wrong item, you can execute "File->Options->Privacy-> Manage other programs' access to Skype->Change->OK" to open the window as above to make another selection.

After running SkypeMate, the icon will appear to the system tray as shown below:



That indicates the device and Skype are connected successfully.

If the icon shown as , please run Skype first.

If the icon shown as , it means USB Adaptor connected incorrectly, please reconnect USB Adaptor to PC.

Note: When SkypeMate startup, the default channel is PSTN.

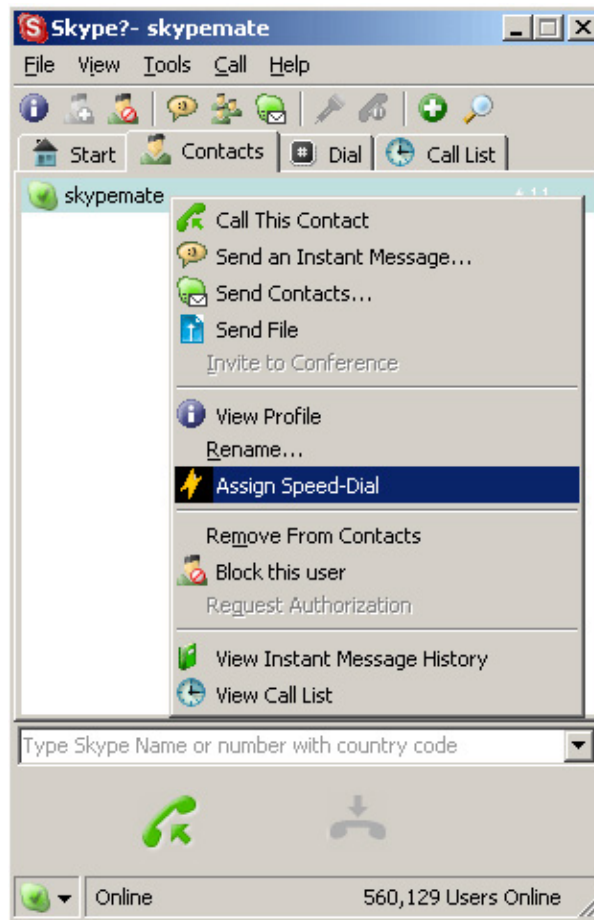
2.4 Channels Switch

You can press "*" to switch PSTN channel to USB channel or switch USB channel to PSTN channel.

2.5 Make calls through USB

2.5.1 Call another Skype user (PC to PC)

- ▣ Add "skypemate" to Contacts
- ▣ Assign Speed-Dial for it, for example "11"



- ▣ Input number and call out:
Press "*" to change to USB channel, the "USB" indicator is on. Press digital "1" and "1" on the phone, this number will be shown on Skype window, then press "#" to call out. When you hang up, the USB Adaptor switch to PSTN channel automatically.

2.5.2 Call to regular phone (PC to Phone)

Press "00"+"country number"+"phone number"+"#" can start the Skype out.

Example: call to China, beijing, press 00861012345678, then press "#".

0086	10	12345678
-----	-----	-----
country code	city code	destination number

Note: If you want to use this function, you should buy SkypeOut Credit first.

2.6 Make calls through PSTN (Phone to Phone)

Check the PSTN indicator is on, then press the wanted phone, and press “#” to call out. If the PSTN indicator is off, press “*” key to make it on.


Example: call to China beijing 00861012345678

Operation: Input the number 00861012345678, then press “#” to call out.

2.7 Answer a call

When a call in, the phone is ringing, pick up handset or press handfree key to answer the call.

2.8 Adjust options (volume and default channel)

Double-click the  on the taskbar, then you can adjust the volume and default channel.

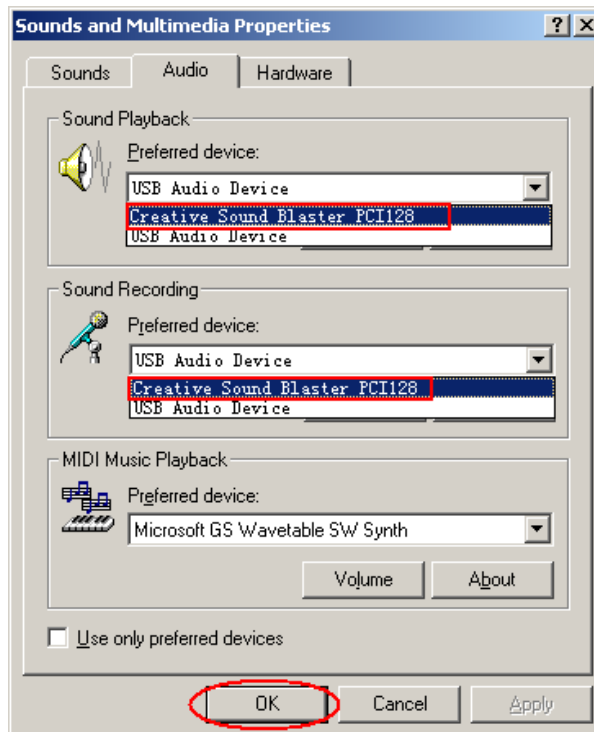
2.9 FAQ

Problem 1

There is no voice comes out when play music?

Resolution

Please execute the “Control Panel->Sound and Video ()->Audio”, set **Sound Playback** and **Sound Recording**’s Preferred device to your sound card, it shown as below:

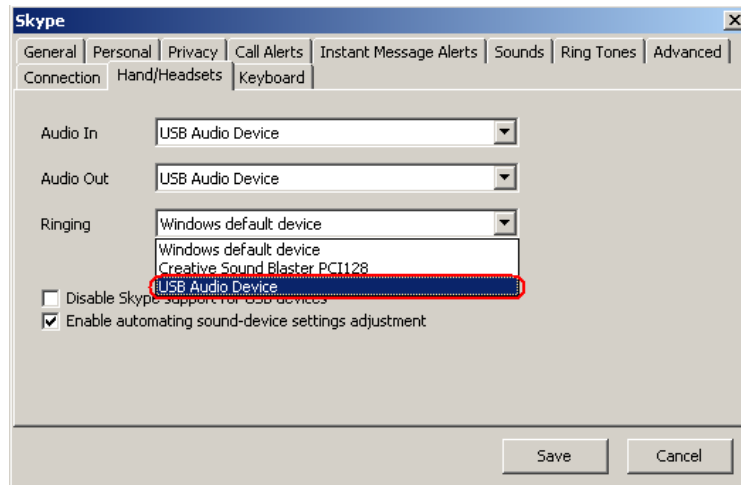


Problem 2

The voice is played from the PC's sound card instead of the USB phone when I make/answer a call?

Resolution

Open the Main window of Skype, click on "File->Options", and go to the table **Hand/headsets**, set **Audio In**, **Audio Out** and **Ringing** to the **USB Audio Device**.

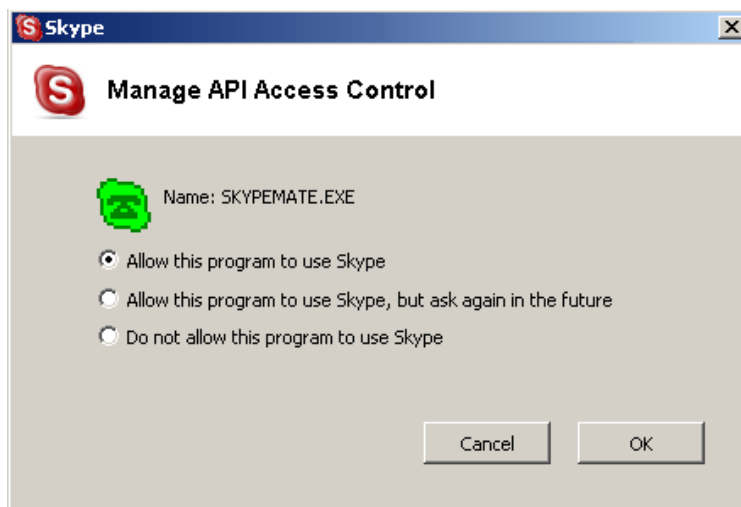


Problem 3

Skype has been startup, but the icon of SkypeMate still shown as ?

Resolution

Maybe you selected the wrong item, you can execute "File->Options->Privacy-> Manage other programs' access to Skype->Change->OK" to open the window as below, and make another selection.

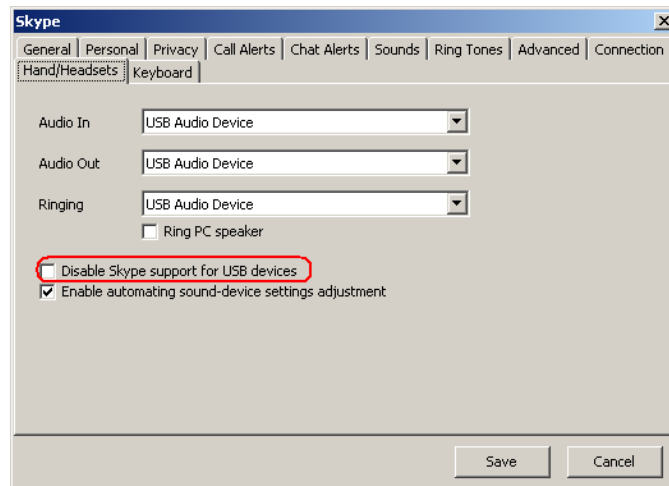


Problem 4

When you minimize the Skype windows, Skype will exit?

Resolution

Execute "File->Options->Hand/Headsets" to open the windows as below:



And don't select the check box before "Disable Skype support USB devices".